



NEQMAP
Network on Education Quality
Monitoring in the Asia-Pacific

2022 NEQMAP ANNUAL MEETING

15-16 December in Bangkok, Thailand (Hybrid modality)

2023 Priority Areas of Work *Secretariat proposal*

Outline

- Modality of work
- Priority areas of work
- Break-out discussions and reporting

Modality of work: stronger focus on the purposes of assessment

Assessment for learning

- Formative assessment
- Classroom and school level

Monitoring learning

- Large-scale assessment
- System level

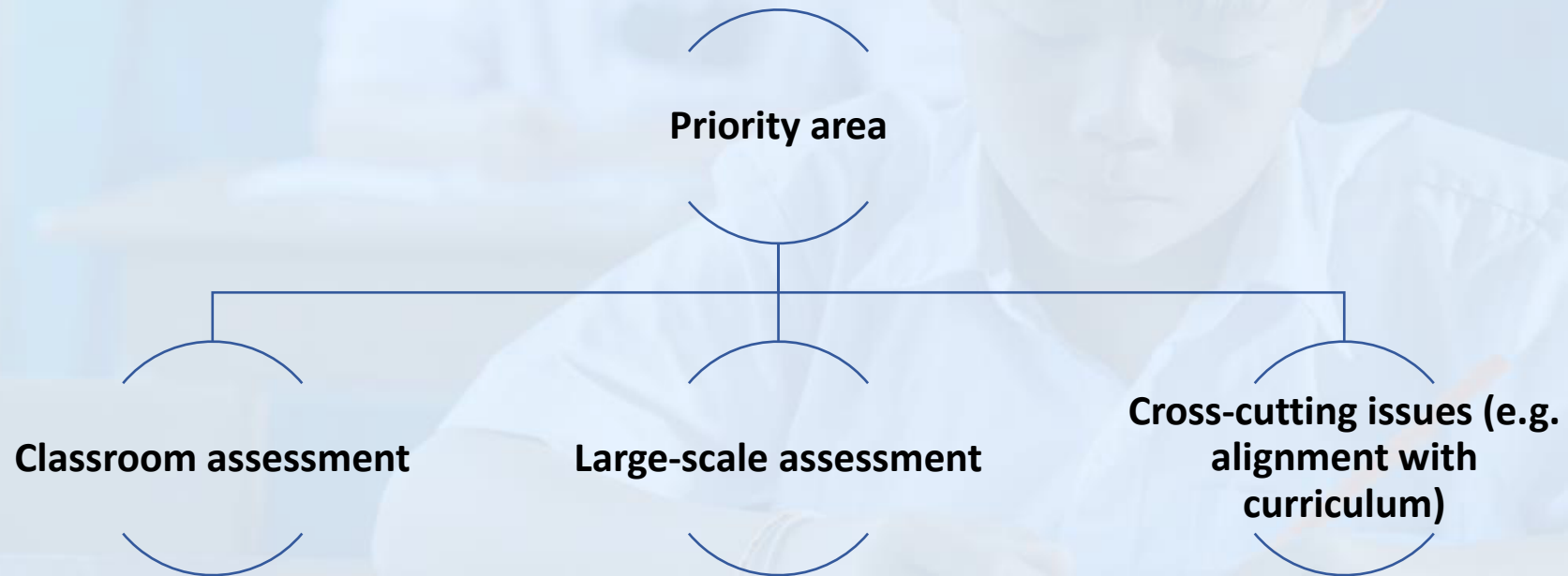
Progression and certification

- Examinations, summative assessment
- Administrative role

Modality of work: stronger focus on the purposes of assessment

- Focus on “assessment for learning” and “monitoring learning”
- Organize activities and projects centered on each purpose or cross-cutting issue
- Encourage members to create task forces, ad-hoc groups to advance work on each.

Modality of work: stronger focus on the purposes of assessment



Two priorities areas for 2023

Learning assessments' role in promoting equity and inclusion

Assessing 21st century skills at system and classroom levels

Priority 1: Learning assessments' role in promoting equity and inclusion

Equality

- Equality in learning outcome between population subgroups

Equity

- Equitable access to quality teaching and learning opportunities

Inclusion

- Inclusive teaching and learning and learning environments

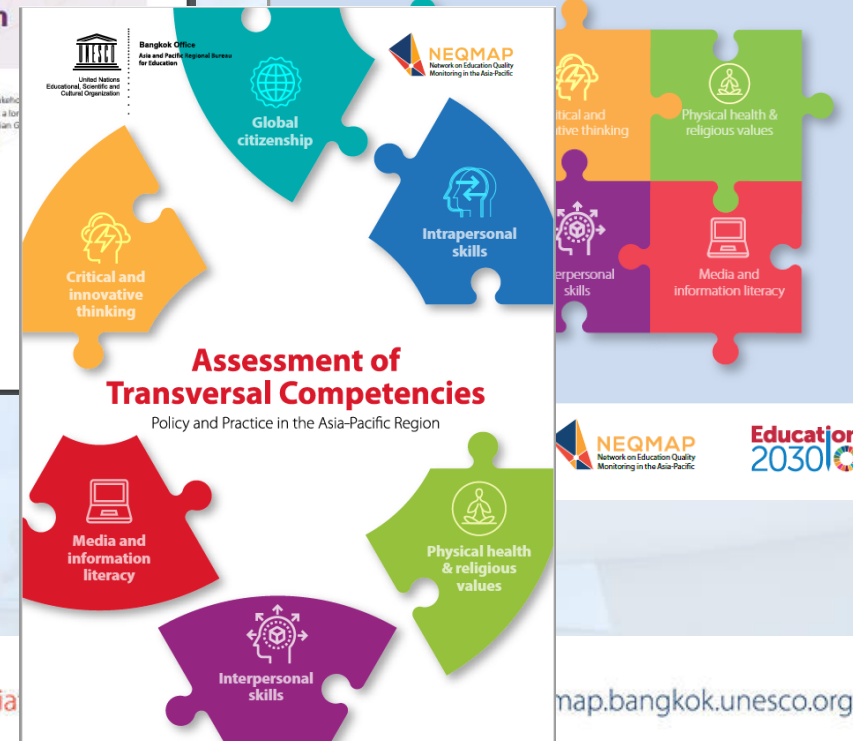
Past NEQMAP work on the topic



Priority 1: identified key issues

	Large-scale assessment	Classroom based assessment
Equality	<ul style="list-style-type: none"> - Monitoring learning outcomes of sub-population groups (by gender, location, socio-economic background, language etc.) - Designing assessments to capture learning outcomes of various population sub-groups 	N/A
Equity	<ul style="list-style-type: none"> - Designing assessment tools to capture equity dimensions through background questionnaires - Assessing learning outcomes of out of school children and youth 	<ul style="list-style-type: none"> - Ensuring lack of gender bias in classroom assessment
Inclusion	<ul style="list-style-type: none"> - Monitoring inclusion through LSAs 	<ul style="list-style-type: none"> - Developing tools and capacity for diagnostic assessment - Inclusive assessments - Assessing learning of out of school children and youth to reintegrate them in the learning process

Priority 2: Assessing 21st century skills at system and classroom levels



Priority 2: Assessing 21st century skills at system and classroom levels

Cross-cutting issues

- Defining skills constructs, domains and sub-domains
- Integration in curricula
- Defining learning progressions for 21st century skills

Large-scale assessment

- Designing items and tasks to assess 21st century skills in a standardized large-scale assessment
- Ensuring relevance across contexts

Classroom based assessment

- Tensions with the prevalent testing and examination culture
- Lack of integration in teachers' training and professional development
- Lack of examples of classroom approaches and teaching guides

Purpose of the break-out sessions

Goals:

- Identify key issues/topics that are relevant to NEQMAP's mandate
- Identify key issues/topics that are urgent to address
- **Identify key issues/topic of focus in 2023**



THANK YOU