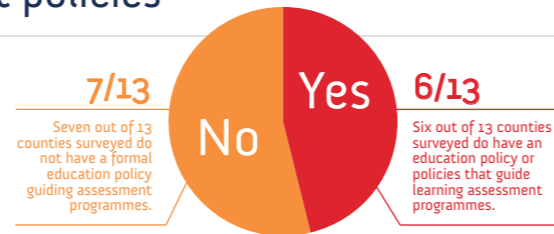


The Network on Education Quality Monitoring in the Asia-Pacific (NEQMAP) Secretariat at UNESCO Bangkok surveyed 13 countries in the region in order to learn more about their participation in national, regional and international assessments, the nature of these assessments, analysis of assessment data, and the policy environment. This infographic reflects the survey responses on matters of particular interest. The NEQMAP Secretariat is now working to collect this information for all countries in the region.

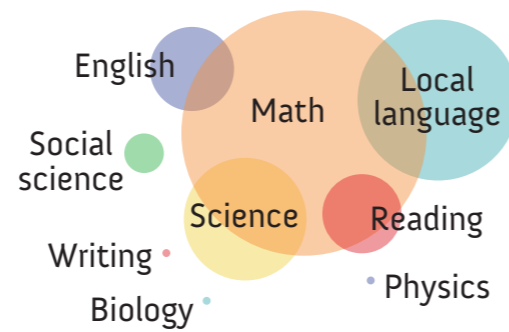
Countries with learning assessment policies*



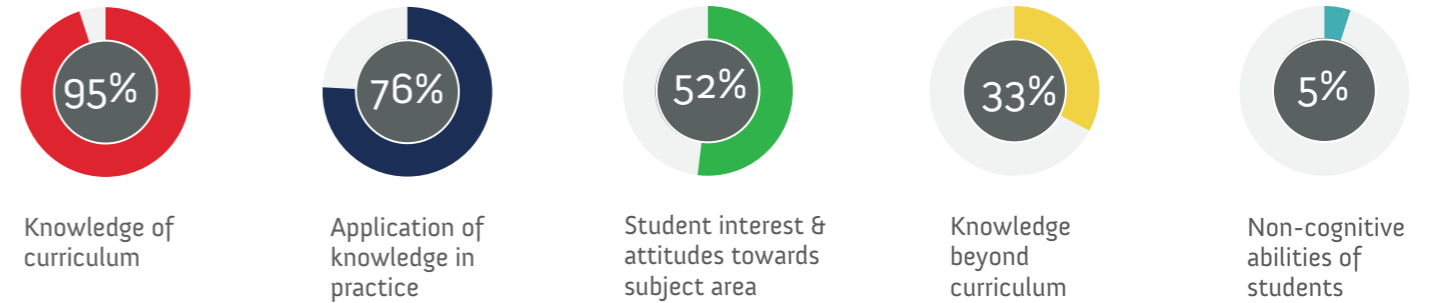
*Of the 13 countries surveyed as part of NEQMAP's mapping study, only six countries have education policies that guide assessment programmes.



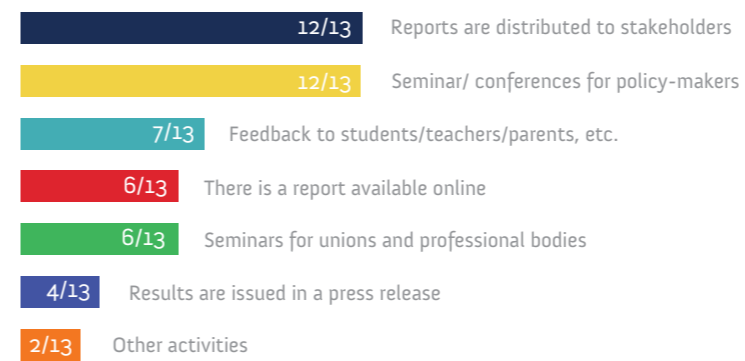
Subjects tested



What is measured by national assessment?



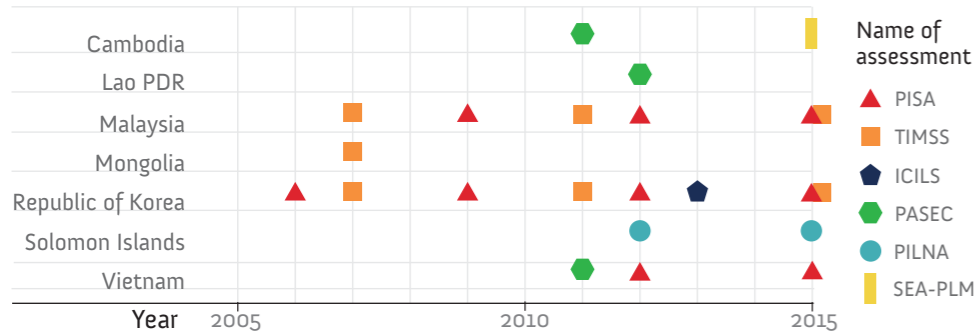
How assessment results are shared



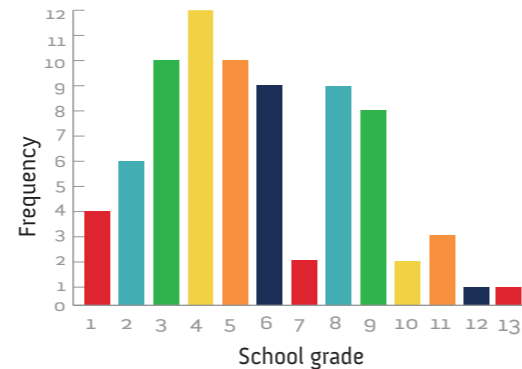
National assessment results used for



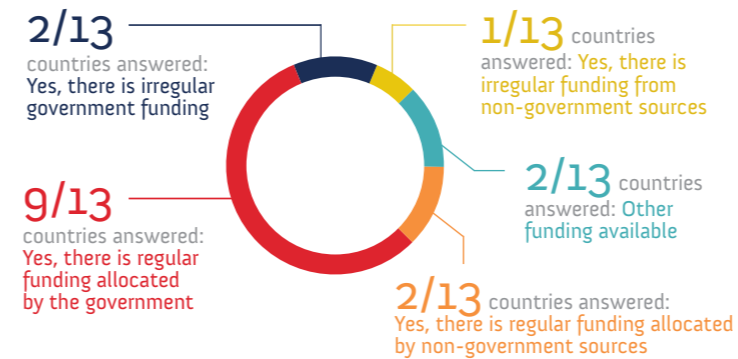
Country International & regional assessments



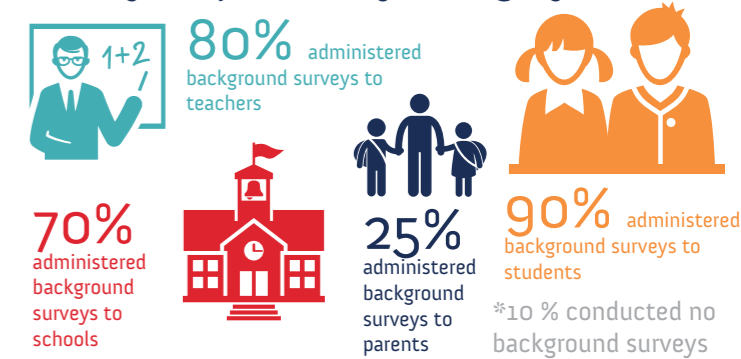
Grades tested



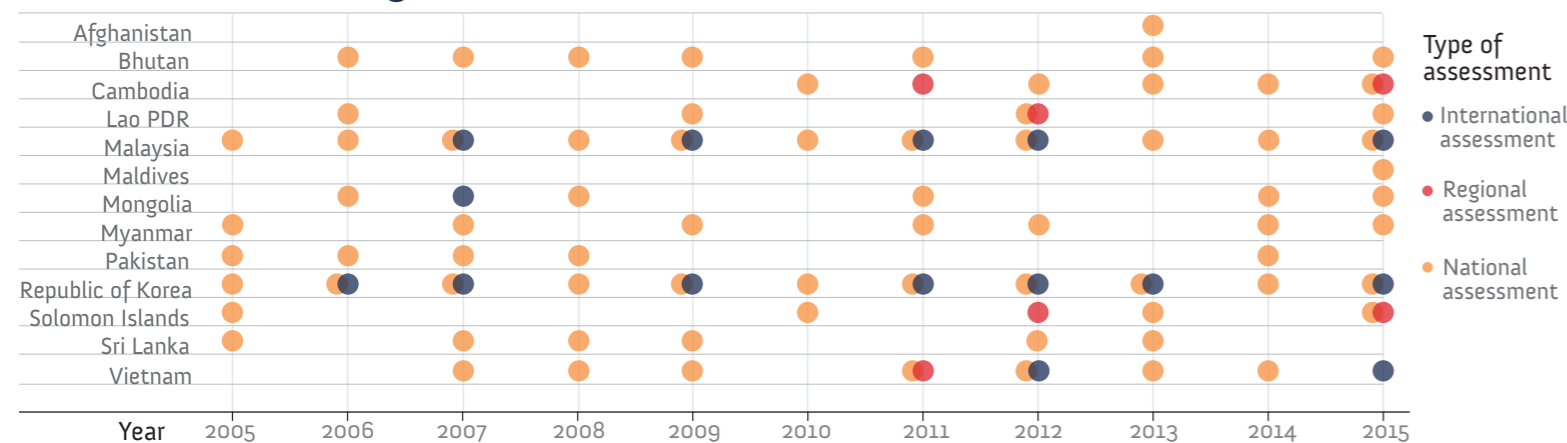
Is funding available for the national assessment programmes?



National assessment background survey responses by category



Country Learning assessments, 2005 - 2015



Purpose of quantitative analysis on national assessment

